

Inline Flow Control Valve

• Brand new, WOLVERINE by PRINCE inline flow control valves. Designed to provide flow control and shut-off in one flow direction while providing free flow in the opposite direction. Color bands for easy flow adjustments and fast return to previous setting. Set screw to lock valve to any setting. Carbon steel body.

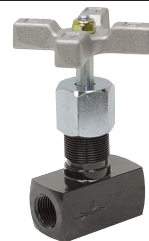


ITEM	Model	Ports	PSI	GPM	Shpg.	Price
902370	WFC-600	3/8" NPT	5000	0-8	2 lbs.	\$39.85
902371	WFC-800	1/2" NPT	5000	0-15	3 lbs.	\$50.65

Inline Needle Valves



• Brand new, WOLVERINE by PRINCE inline needle valves. Designed to provide flow control in both directions. Carbon steel body.



ITEM	Model	Ports	PSI	GPM	Shpg.	Price
902375	WNV-600	3/8" NPT	5000	0-8	2 lbs.	\$48.60
902376	WNV-800	1/2" NPT	5000	0-15	3 lbs.	\$73.60
902377	WNV-1200	3/4" NPT	3000	0-25	4 lbs.	\$75.60
902378	WNV-1600	1" NPT	3000	0-40	7 lbs.	\$183.60

Inline Flow Control Valves

• Brand new, DYNAMIC inline flow control valves. Designed to provide flow control and shut-off in one flow direction while providing free flow in the opposite direction. Allen head lock screw to lock valve to any setting. Carbon steel body with black oxide plating and zinc alloy coated handle.



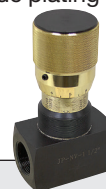
SPECIFICATIONS

- Maximum Pressure 5000 psi
- Temperature Range -4° to 176°F (-20°C to 80°C)

NPT					
ITEM	Model	Ports	GPM	Shpg.	Price
905980	JPFC-1/4-NPT	1/4" NPT	0-10.5	1 lb.	\$26.45
905981	JPFC-3/8-NPT	3/8" NPT	0-15.5	2 lbs.	\$29.80
905982	JPFC-1/2-NPT	1/2" NPT	0-22.5	3 lbs.	\$33.20
905935	JPFC-3/4-NPT	3/4" NPT	0-46.0	3 lbs.	\$38.20
905936	JPFC-1-NPT	1" NPT	0-52.5	6 lbs.	\$69.20
905985	JPFC-1 1/4-NPT	1 1/4" NPT	0-79.0	13 lbs.	\$123.35
SAE					
905983	JPFC-SAE-6	SAE 6	0-15.5	2 lbs.	\$29.80
905984	JPFC-SAE-8	SAE 8	0-22.5	3 lbs.	\$33.15

Inline Needle Valves

• Brand new, DYNAMIC inline needle valves. Designed to provide flow control in both directions. Allen head lock screw to lock valve to any setting. Carbon steel body with black oxide plating and zinc alloy coated handle.



SPECIFICATIONS

- Maximum Pressure 5000 psi
- Temperature Range -4° to 176°F (-20°C to 80°C)

NPT					
ITEM	Model	Ports	GPM	Shpg.	Price
905988	JPNV-1/4-NPT	1/4" NPT	0-10.5	1 lb.	\$26.45
905989	JPNV-3/8-NPT	3/8" NPT	0-15.5	1 lb.	\$29.85
905990	JPNV-1/2-NPT	1/2" NPT	0-22.5	3 lbs.	\$33.15
905986	JPNV-3/4-NPT	3/4" NPT	0-46.0	3 lbs.	\$40.25
905987	JPNV-1-NPT	1" NPT	0-52.5	5 lbs.	\$69.20
905992	JPNV-1 1/4-NPT	1 1/4" NPT	0-79.0	10 lbs.	\$123.40
905991	JPNV-1 1/2-NPT	1 1/2" NPT	0-105.5	19 lbs.	\$218.15
SAE					
905993	JPNV-06-SAE	SAE 6	0-15.5	1 lb.	\$29.80

3 Way High Pressure Ball Valves

• Brand new, DYNAMIC DE Series 3-way diverter ball valve. Suitable for hydraulic and water applications. Constructed of high-carbon steel with zinc-chromate plating. Standard POM ball seals with Buna stem seals.



NPT	ITEM	PSI	Ports	Shpg.	Price
	903656	5880	1/4" NPT	1 1/2 lbs.	\$ 49.20
	903657	5880	3/8" NPT	2 lbs.	\$ 51.60
	903658	5145	1/2" NPT	3 lbs.	\$ 55.00
	903659	5145	3/4" NPT	5 lbs.	\$ 79.85
	903660	5145	1" NPT	7 lbs.	\$ 96.30
	903668	4500	1 1/4" NPT	7 lbs.	\$152.85
	903669	4500	1 1/2" NPT	12 lbs.	\$187.35
	903670	4500	2" NPT	15 lbs.	\$220.70
SAE	903662	5880	SAE 4	1 1/2 lbs.	\$ 52.90
	903663	5880	SAE 6	2 lbs.	\$ 55.55
	903664	5145	SAE 8	3 lbs.	\$ 59.80
	903665	5145	SAE 12	5 lbs.	\$ 85.70
	903666	5145	SAE 16	7 lbs.	\$101.55
	903671	4500	SAE 20	7 lbs.	\$152.85
	903672	4500	SAE 24	12 lbs.	\$193.00
	903744	4500	SAE 32	15 lbs.	\$230.75

High Pressure Ball Valves

• Brand new, DYNAMIC Fluid Components DE2 Series ball valves. Suitable for hydraulic and water applications. Constructed of high-carbon steel with zinc-chromate plating. Standard POM ball seals with Buna stem seals. Temperature range -30 to 212° F.



NPT	ITEM	PSI	Ports	Shpg.	Price
	901826	7250	1/4" NPT	1 1/2 lbs.	\$ 25.85
	901827	7250	3/8" NPT	2 lbs.	\$ 27.45
	901828	7250	1/2" NPT	3 lbs.	\$ 30.65
	901829	5800	3/4" NPT	5 lbs.	\$ 59.05
	901830	5000	1" NPT	7 lbs.	\$ 68.95
	903673	5000	1 1/4" NPT	8 lbs.	\$ 81.70
	903674	5000	1 1/2" NPT	10 lbs.	\$ 99.95
	903675	5000	2" NPT	13 lbs.	\$141.90
SAE	901831	7250	SAE 4	1 1/2 lbs.	\$ 30.00
	901832	7250	SAE 6	2 lbs.	\$ 31.90
	901833	7250	SAE 8	3 lbs.	\$ 35.75
	901834	5800	SAE 12	5 lbs.	\$ 69.60
	901835	5000	SAE 16	7 lbs.	\$ 84.30
	903676	5000	SAE 20	8 lbs.	\$ 90.45
	903677	5000	SAE 24	12 lbs.	\$110.90
	903678	5000	SAE 32	15 lbs.	\$149.20